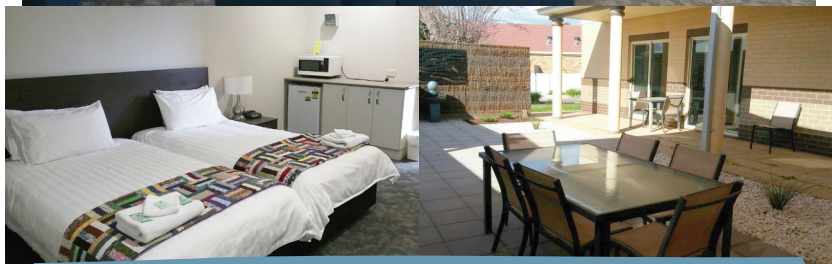




LILIER LODGE



**PROVIDING
ACCOMMODATION
AND SUPPORT**

LILIER LODGE was purpose built by Can Assist and the Cancer Council NSW with the support of local and regional communities to provide accommodation for people undergoing cancer treatment at nearby facilities including the Riverina Cancer Care Centre, Wagga Wagga Rural Referral Hospital and Calvary Hospital. When vacancies allow, we extend our hospitality to people travelling for other medical appointments.

Lilier Lodge is a self-care facility with twenty double rooms each furnished with an ensuite bathroom, two king single size beds, flat screen TV, small refrigerator, microwave, tea and/or coffee making facilities, and heating and cooling. Each guest also has access to a communal lounge room with a guest computer with free Wi-Fi, books, jigsaw puzzles, games, TV and DVD player. There is outdoor open space including a Serenity Garden to rest and relax.

All linen is provided and rooms are serviced on a weekly basis. There is a guest laundry with coin operated washing machines and dryers, clothes lines and ironing facilities.

A continental breakfast is included with the accommodation and guests may also use the communal kitchen and BBQ area to prepare their own meals.

To accommodate families, there is also a private entranced, fully self-contained one bedroom unit with a queen size bed, sofa bed, bathroom, kitchen, laundry, two flat screen TVs, heating and cooling.

Call us for any further information and bookings.

P 02 6925 5240 | F 02 6925 2759

E lilierlodge@canassist.com.au

317 – 321 Edward Street

Wagga Wagga NSW 2650